

DEAN GILES MUSIC EDUCATION

Treble Clef



The Treble Clef, also known as the “G” Clef, is indicated by the fancy “G” to the left of the staff.

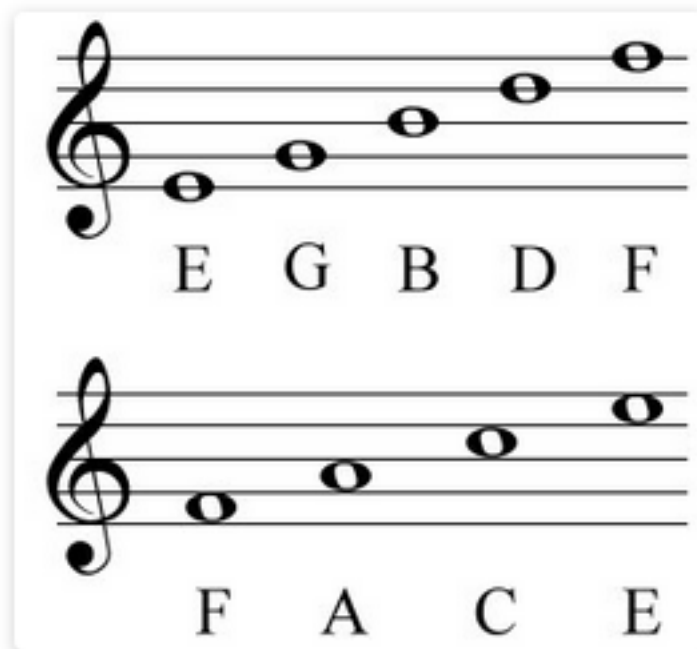
The curl at the bottom of the clef circles around the line that the note “G” is on.

From there we can easily identify where the other notes are on the staff.

The musical alphabet only contains 7 letters, A, B, C, D, E, F, G then back to A.

Here is the Treble or “G” Clef with the note names. Two clefs are shown in this example to make it easier to see the placement of the notes on the lines and in the spaces.

The spaces are easy to remember as they simply spell out the word “FACE”.



Using study cards like the ones below are a good way to learn the note placements quickly.

